

February/March 2009

730 East 38th Street
Minneapolis, MN 55407

Change Service Requested

Nonprofit Org.
U.S. Postage
PAID
Minneapolis, MN
Permit No. 3134



DINING OUT FOR LIFE

Voted #1 Community Fundraiser

Dining Out For Life was named
#1 Community Fundraiser by Lavender Magazine's Fab 50
Awards in 2008 and 2007.



Mark your calendars now for the
15th annual Dining Out
For Life event:

**THURSDAY,
April 30, 2009**

Ambassadors, it is not too early to contact
us about your restaurant choices and shifts!



KARE 11 meteorologist and DOL diner Sven Sundgaard

the Aliveline

Serving Our HIV/AIDS Community Since 1985

February/March 2009

Vol. 19, Issue 1

A New Year!

DINING OUT FOR LIFE — Mark your calendars for Dining Out for Life, which this year takes place on Thursday, April 30. If you know of a restaurant that might want to participate, please contact Tim Marburger at our office.

MARCH IS MINNESOTA FOODSHARE MONTH — March is Minnesota FoodShare Month. Like other food shelves in our state, the current economic situation has caused a dramatic increase in the number of people needing help from local food shelves. In 2008, our Food Shelf provided 13 percent more services than the previous year. So, please consider sending a donation to help us respond to this dramatic increase of those in need.

MIRACLE ON 38TH STREET — This year's Holiday Basket Program was a wonderful success! It really is a miracle how hundreds of caring volunteers care enough to make this happen! This year, we distributed 685 baskets (58 more than last year!) with gifts for more than 900 adults and 400 children! This year, 516 baskets were adopted—compared to 397 in 2007!

Thanks to everyone who donated presents, made financial gifts and volunteered. People like you have helped make this miracle happen for the past 22 years! Here is what one of this year's recipients said about her basket: "I want to thank the donors and volunteers who made this Christmas the most joyous of all my life! Everything was so beautiful. It was like they'd been my friends for life and knew everything I needed and wanted. Thank you all so much for your thoughtfulness!"

Special thanks to the following businesses, groups and individuals who made generous donations this year:

- Après Party & Tent Rental – loaned 41 tables for our Holiday Basket Program
- All God's Children Metropolitan Community Church – adopted 27 individuals
- Atoms of Minneapolis collected more than \$500 in donations
- ATS-Labs - adopted three large family baskets
- Banfield, The Pet Hospital, of Richfield - who adopted four large families with pets
- Bill & Barb Taylor- adopted six family baskets
- BioScrip Pharmacy - adopted several large family baskets
- The Chair Salon - adopted four large family baskets
- Coffee Table Productions - adopted a LARGE family basket
- Communications Workers of America, Local 7250, AFL - adopted a LARGE family basket
- David Dexheimer - adopted six holiday baskets
- De La Salle High School - adopted 10 people
- John Doll - adopted 70 holiday baskets
- First National Bank of the Lakes- adopted a very LARGE family basket
- Friendly Hills Middle School - adopting a family of 8
- Gopher Women's Hockey - adopted a family of 10
- Integrated Healthcare Strategies – adopted six large family baskets
- Kelsey True - adopted five baskets
- M&I Bank - donated \$250
- Macalester Plymouth United Church Youth - adopted 10 individuals
- Medtronic - adopted a number of really LARGE family baskets
- Minnesota Department Of Health, HIV/AIDS Division - adopted four large family baskets
- MOMS Club-White Bear Lake/Vadnais Heights - adopted many large families

- New Spirit United Church of Christ - adopted numerous large family baskets
- Palace Concessions - adopted several large family baskets
- Park Nicollet Health Services - adopted several large family baskets
- Erika Shatz - for adopting 8 holiday baskets
- St. Joan of Arc Catholic Church – donated 1,769 pounds of food shelf items and many members adopted baskets
- St. Paul Mennonite Fellowship - for joining us this year as a first time adopter
- Timothy Kanaley - adopted six large family baskets
- Toys For Tots Minnesota provided hundreds of toys for children. Thanks to the Marines
- TRUST Youth Groups - adopted 15 people
- Walden University - adopted three large family baskets
- Wells Fargo Home Mortgage - Lien Release Department who adopted four large families
- Westminster Presbyterian - donated 1,000 pairs of socks and \$280 in donations
- Robb Whittlef - adopted 10 baskets

JOE LARSON
EXECUTIVE DIRECTOR

3 Food Shelf In Demand & Holiday Baskets 2008
Recap of the Seasons' Events

5 Living Stronger! Living Longer!
The new Health and Wellness team

6 Getting To Know You
Meet Ron - Our Volunteer Massage Therapist!



In Living Memory

James M.
*departed
this life*
Nov. 22, 2008

Gary O.
*departed
this life*
Dec. 1, 2008

Ibrahim S.
*departed
this life*
Dec. 1, 2008

Robert A.
*departed
this life*
Jan. 2, 2009

Colleen H.
*departed
this life*
Jan. 7, 2009

Laverne H.
*departed
this life*
Jan. 15, 2009



Volunteers take home a teddy for all their volunteer work!

The Aliveness Project

Board of Directors

Marsha Berry
Daniel Cashman
Terry Chambers
Deb Cohen, VICE PRESIDENT
Max Fallek
Jeffrey Farnsworth
Dean Halland
Randy Hornstine, PRESIDENT
Joe Larson
Brian LeMere, SECRETARY
Barbara Satin
Scott Schlaffman
William Schlichting
Gabriel S'Halo-Gaslin
Joseph Smith, Jr., MAC PRESIDENT
David Welper, TREASURER

Membership Advisory Committee

Pam Benson
Daniel Cashman
Adam Fairbanks
Tom Genty
David Hanson
Kristi Holthus
Randy Hornstine
Dawn Marie Hrubinski
Craig Jacobson
Rob Kacheroski
Kim Langness, VICE PRESIDENT
Joseph Menkevich
Roger Moore
Michael Oian
Darin Olson

Scott Schlaffman, SECRETARY
Joseph Smith, Jr., PRESIDENT
Gary Taugner

Staff

Katherine Barton
GRANT WRITER
Dan Capelli
FOOD SHELF DIRECTOR
Sean Divine
DIRECTOR OF FOOD SERVICES
Reneka Evans
HEALTH & WELLNESS PEER EDUCATOR
Mark Feder
FOOD SHELF ASSISTANT
Dan Gerard
COOK
Jennifer Gunderson
GAMING COORDINATOR
Donavan Harmel
KITCHEN ASSISTANT
Johnny Herda-Anzaldo
DIRECTOR OF MEMBERSHIP SERVICES
Andrew Hruska
CASE MANAGER
Kim Langness
Receptionist
Joe Larson
EXECUTIVE DIRECTOR
Tim Marburger

DIRECTOR OF FUNDRAISING & SPECIAL EVENTS

Esther Mendez
KITCHEN ASSISTANT
Frank Mlakar
KITCHEN ASSISTANT
Darin Olson
PEER EDUCATOR
James Pennington
HEALTH & WELLNESS PROGRAM COORDINATOR
Lee Silverstein
ACCOUNTANT
Monica Travis
DIRECTOR OF VOLUNTEER SERVICES
Cathy VanValkenburgh
MEMBERSHIP SERVICES PROGRAM ASSISTANT

The Aliveline is a bi-monthly publication of The Aliveness Project, Inc. The Aliveness Project is a 501(c)(3) nonprofit organization, founded in 1985 as a membership organization for individuals living with HIV/AIDS. This newsletter may report on experimental and other therapies; however, The Aliveness Project does not recommend any particular therapy. Please consult with your medical provider before trying any new treatment. Views and opinions expressed in this publication are those of the contributing authors and are not necessarily those of The Aliveness Project.

Thank You!

BY MONICA TRAVIS

Over 100 folks braved one of the coldest nights in recent history to attend our Volunteer Recognition Movie Night at the Heights Theatre on Thursday, Jan 15th. All enjoyed the sing-along version of the film *MAMMA MIA!* preceded by our own premiere of the short film *ALIVE!* created in late 2008 by photographer Justin Thai. It chronicles 24 Aliveness Project members and in their own words and pictures describes their experiences with The Aliveness Project. Look for it soon on our website www.aliveness.org. Our kitchen baked an amazing chocolate cake for our reception during which we raffled off several prizes including \$125 in spa services and we listened to the musical styling of the tuxedo clad volunteer, Harvey, who played the Heights incredible classic Wurlitzer organ.

My thanks go out to all of our volunteers who made 2008 such a success. Whether you help once a year, or multiple times a week, together all of us make a huge difference in the success of The Aliveness Project and our continued ability to build and create a true sense of community.

With all this said, do know that Dining Out for Life is but a blink away and we are going to be once again in need of hundreds of ambassadors! Please see Tim's article for more information about what we seek in our great ambassadors and do be in touch about joining in on Thursday, April 30th!





2009 Dining Out For Life RESTAURANT AGREEMENT FORM

Restaurant: _____
Contact Name: _____
Address: _____

City: _____ State: _____ Zip Code: _____
Office Phone: _____ Restaurant Phone: _____ Fax: _____
Website: _____ E-mail: _____
Thursday Business Hours: _____ Cuisine: _____ Region: _____

This agreement for participating in the Dining Out for Life event to be conducted in on Thursday, April 30, 2009 is between _____ (Restaurant) and The Aliveness Project, Inc. (Collectively "DOL").

Your restaurant, _____, agrees to:

- Donate to The Aliveness Project your designated percentage (**indicate actual percentage on line provided**) of total food and beverage sales on Thursday, April 30, 2009:

- Platinum Level (35% or higher): _____%
- Gold Level (25 - 34%): _____%
- Silver Level (20 - 24%): _____%
- Bronze Level (15 - 19%): _____%

Check all meals applicable: Breakfast Lunch Dinner

Check one: Food & Beverage (including alcohol) Food & Beverage (no alcohol)

- Promote Dining Out for Life within the restaurant by hanging posters, and distributing other promotional material provided by DOL at least three weeks prior to event.
- On the day of the event, distribute to each patron informational material provided by DOL, including donation/feedback envelopes; **and** permit volunteer ambassador(s) at restaurant to thank patrons and answer questions about The Aliveness Project.
- Allow restaurant's name and/or logo to be used in promotional materials as per participation level.
- **Submit a check in the amount of restaurant's above-designated donation, made payable to THE ALIVENESS PROJECT by Friday, May 1, 2009.**

The Dining Out for Life Committee (DOL) agrees to:

- Organize the event, including arranging restaurant participation and public relations.
- Promote Dining Out for Life and participating restaurants by placing advertisements in local media, distributing posters, sending a targeted direct-mail promotional postcard to potential diners, and press releases to local media.
- Solicit media and corporate sponsorship.
- Provide promotional materials to restaurants.

Restaurant Representative's Signature: _____ Date: _____

Aliveness Project Representative's Signature: _____ Date: _____

PLEASE RETURN YOUR COMPLETED FORM TO:

The Aliveness Project – Attn: Tim Marburger
730 East 38th Street, Minneapolis, MN 55407

Tel: 612.822.7946 Fax: 612.822.9668 events@aliveness.org

Holiday Baskets 2008

By TIM MARBURGER



GREAT THANKS to the **MANY NEW** folks who joined us by adopting Holiday Baskets. Also **THANKS** to the **MANY RETURNING** people who adopted. We are blessed to have many wonderful people step up to help with this very worthwhile program that brings joy to so many people. We had 516 adoptions this year!

THANK YOU EVERYONE!



Mark your calendar for
Dining Out for Life – APRIL 30, 2009



Seems like yesterday, but it's time again! Last year we had 133 restaurants participate in this one day event and we're hoping for many more this year. We are currently working on soliciting restaurants throughout the state to join us. What are your favorite places to dine? Ask if they would be interested. We have included a restaurant agreement form in this newsletter for your use.

With the expansion of restaurants, we are in need of ambassadors to be at each restaurant that day. We will have breakfast, lunch and dinner openings to fill. Last year, ambassadors raised an additional \$29,000 toward the work of The Aliveness Project. That amount buys a lot of hot meals or therapies. We do need to increase this total substantially. In some Dining Out for Life cities, they raise more through their ambassadors than the restaurants bring in.

Ambassador Qualifications?

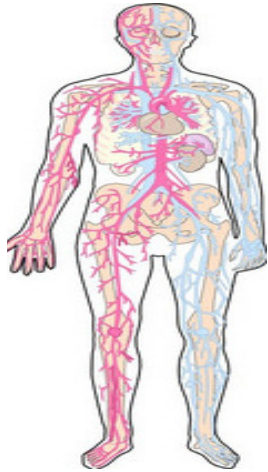
1. Talk glowingly about The Aliveness Project.
2. Have hundreds of friends to invite to your restaurant – I hear joining Facebook is good for your health.
3. Attend a MANDATORY 1.25 hour training prior to the event.
4. Able to talk with strangers, if all your friends don't show up.
5. Be able to smile for 3 – 4 hours.
6. Wear comfortable shoes.
7. Enjoy life and have FUN!



Living Stronger! Living Longer!

By JAMES PENNINGTON

You are amazing! Your body is made of more than 50 trillion cells, 650 muscles and 206 bones, all powered by a heart that beats close to 36 million times each year. You breathe in and out more than 23,000 times a day, and during the seconds it will take you to finish reading this sentence your eyes will perform 10 billion computer-like calculations.



The Aliveness Project's Health and Wellness Program is all about making sure your amazing body is as healthy as possible as you live with HIV. We are designing our member program with a holistic approach involving physical, mental and spiritual health.

Here is list of a few upcoming events hosted by the Health and Wellness Program February-March. Events held at The Aliveness Project unless otherwise noted.

Monday, February 2: @ 6 pm "Building Your Health Care Team" @ "Spill the Wine" located @ 1101 Wash. Ave. S - Sign-up with the Receptionist. Space is limited!

Tuesday, February 3: @ 6 pm "Global and Local HIV Statistics" Mary Grandy from the County Health Department Presents

Tuesday, February 10: @ 6 pm "An Evening with the Docs!" Dr. Carolina Fall and Dr. Jeff Meyer will field Health Questions, Concerns and Issues for those living with HIV/AIDS

Tuesday, February 17: @ 6 pm "Making Love the Best It Can Be" Clare from "Smitten Kitten" Returns!

Monday, February 23: @ 6 pm "An Evening with Ernie" (Topic TBA) @ "Spill the Wine" located @ 1101 Wash. Ave. S - Please Sign-up with the Receptionist. Space is limited!

Tuesday, March 3: @ 6 pm "An Evening with the Doc!" Dr. Carolina Fall will field Health Questions, Concerns and Issues for those living with HIV/AIDS @ Clare Housing located @ 929 Central Avenue NE.

Monday, March 9: @ 6 pm "Medication Adherence for WOMEN" @ "Spill the Wine" located @ 1101 Wash. Ave. S - Please Sign-up with the Receptionist. Space is limited!

Tuesday, March 17: @ 6pm - "Increasing Energy and Improving Mood" Jennette Turner, Registered Nutritionist is presenting!

NOTE: Attendees will receive a \$10 Target gift card for every session attended (with the exception of the "Spill the Wine events") ONLY while supplies last through February!

WOMEN LIVING WITH HIV!

Darin, the Health and Wellness Program Peer Educator, will be planning and implementing programming specifically designed to meet the needs of WOMEN LIVING WITH HIV. Be sure to share your ideas and topics that you feel are important for women living with HIV/AIDS with Darin or James. We plan on rolling out programming targeting women in April! Be on alert for more information!

HEALTH AND WELLNESS FOR OUR SPANISH SPEAKING FRIENDS!

James will be planning and implementing educational sessions for Spanish-speaking persons living with HIV/AIDS. We want to make sure that we meet the health and wellness needs of all of the members of the Aliveness Project. Please watch for more details on the way!

ONE FINAL NOTE....

We value and appreciate every individual who has taken advantage of the Health and Wellness educational sessions over the past couple of months. You really make the program by sharing your insights and your valuable time. Please feel free to let us know how we are doing and what topics you would like addressed in the future so that you can LIVE STRONG! AND LIVE LONG! with HIV/AIDS!



Food Shelf in Demand

By DAN CAPELLI

Food Shelf usage in pounds in 2008 was a whopping 88,308. That's 44 tons of food. The Aliveness Project's Food Shelf survives on some federal funds, grants, and food drives where we go out into the community, in front of supermarkets like The Wedge Community Co-op, (thanks to the Wedge people). The rest comes from donations from all sources.

With the economy being so bad, I didn't expect much in the way of donations for the month of December 2008. Well, you good folks proved me wrong! Donations for December 2007 were a little over 1800 pounds. Donations for December 2008 were a little over 4600 pounds. Thanks to everyone who helped out by donating and all the volunteers who helped sort all that food.

The March Food Share Campaign is coming soon. In 1982 a collaboration of church councils decided to help food shelves build up their stocks in March because that is when most food shelves run out of holiday stocks. That was the beginning of something that grew into the Minnesota Food Share Campaign. We have been involved for 8 years now and hope to make this our best year ever.



The theme this year is "Imagine." Imagine if everyone in Minnesota donated just 2 pounds or 2 dollars, we would collect approximately 10 million pounds or dollars. How can you help? You can hold a food drive at church, work, school, or any where you can think of. If you don't know how to run a food drive you can go to www.gmcc.org/foodshare and they will tell you exactly how to do that. You can also order free posters, buy balloons, mugs, and other fun stuff. To download a list of items we use in our Food Shelf, go to www.aliveness.org. You need to drop off all food and dollars at The Aliveness Project by Friday April 3, 2009.

We will be doing another Food Drive at The Wedge Community Co-op on March 21 and 22 from 10 AM – 6 PM. We always have lots of fun at these events, so if you want to help call 612- 822-7946 and ask for Monica. She will schedule you for one or more shifts.



Mark your calendars now for the next Food Drive!

March 21 and 22, 2009

At The Wedge Co-op from 10 AM - 6 PM.

If you would like to help:

Call Monica at (612) 822-7946

Getting to Know You

MEET OUR NEW VOLUNTEER MASSAGE THERAPIST

We have a new volunteer massage therapist at The Aliveness Project. He recently graduated from Northwestern Health Sciences University. Ron Cripe started donating two sessions of massage every Friday, as of late September 2008. He is starting his own therapeutic massage business, "Relaxation & Comfort Massage," which is located in Minneapolis (612 483-8672).



Ron Cripe is our new volunteer massage therapist!

Meet Ron!

Where did you grow up?

I grew up in Missoula, Montana on 2 ½ acres with a vegetable garden and all sorts of fruit trees.

What are three words that describe your personality?

Loving, touch-oriented, liberal-minded.

What turns you on creatively, spiritually, or emotionally?

Music, touching people through my work as a massage therapist, and a good joke.

What turns you off?

Phony people, arrogance, and dishonesty.

What is your favorite cereal?

As a child, it was Sugar Frosted Flakes. Now my favorite cereal is Cheerios.

What sound or noise do you love?

Laughter, deep even breathing, or light snoring of a loved one while sleeping.

What sound or noise do you hate?

The screeching tires of a car that is behind me.

What profession other than your own would you like to attempt?

A choreographer.

What profession would you not like to do?

A debt collector.

How did you come to know about The Aliveness Project?

Through the grape-vine, friends, and the community.

What would you like to see happen at The Aliveness Project in 2008?

I would love to see full funding and complete acceptance of the need!



Welcome back Dr. Jared Gruhl, therapist

We also have an old friend returning to volunteer his chiropractic services again. Dr. Jared Gruhl has returned as of December 2008. At present, he is working Monday mornings from 11:00 until 12:00. His hours will probably change with the new year and adjusted therapy room availability. Welcome back, Dr. Gruhl! We missed you.

ORGANIZATIONS

All God's Children
Metropolitan Community Church

Americana Community Bank

Arezzo Ristorante

Atoms of Minneapolis

ATS-Labs

Aveda Institute
Minneapolis

Axis Healthcare

Banfield the Pet Hospital of Richfield

BioScrip Pharmacy

Blue Cross Blue Shield of Minnesota

Brownie Troop #10438

Charles Levin Architects

Children's Theatre Company

Christian Brothers of MN Miguel House

Christos Union Depot Place

City Looks Salon

Clark Wamberg, LLC

Coffee Table Productions

Colonial Life Communications
Workers of America, Local 7250, AFL

DailyMed Pharmacy

Damon Farber Associates

Daren Jensen Group, Inc.

Dave Brookman

David S. Ascher Charitable Foundation

De La Salle High School

Executive Title

First National Bank of the Lakes

First Student

Floral Logic

Friendly Hills Middle School

Girl Scout Troop 50410

GoodSearch

Gopher Women's Hockey

Grand Cafe

Greater Minneapolis Council of Churches- FoodShare

Greater Twin Cities United Way - Donor Designated

Harry's Food and Cocktails

Hennepin County Medical Center / HIV Clinic

Hot Plate

IBM Employee Services Center

Imagehaus

Integrated Healthcare Strategies

Inver Grove Heights Animal Hospital

Kenneth L. Eppich

Fund for the GLBT

Community of Twin Cities

Linden Hills

Acupuncture

Lutheran Church of Christ the Redeemer

M&I Bank

Macalester Plymouth United Church Youth

Macernon Photography

Medtronic Group

Minneapolis South Rotary Club

Minnesota Red Ribbon Ride

MN Department Of Health - HIV/AIDS Division

MOMS Club-WBL/VH

New Spirit United Church of Christ

Northwestern Health Sciences University

One Voice Mixed Chorus

Palace Concessions

Park Nicollet Health Philanthrofund Foundation

Prime Timers - Minneapolis/St. Paul Chapter

Pure Blue Supply Inc Rainbow Road

RE/MAX Results - Amy Ruzick & Kay Johnson

Snap Fitness

Spirit of the Lakes

St. Joan of Arc Catholic Church

St. Paul Mennonite Fellowship

The Chair Salon

The Dorsey & Whitney Foundation

The Imperial Court of Minnesota

TRUST Youth Groups

Twin Cities Gay Men's Chorus

Twin City Divers

Uptown Dermatology & Skin Spa

Walden University

Wells Fargo Home Mortgage Lien Release Department

Westminster Presbyterian Church - Social Justice

INDIVIDUALS

Aaron Crenshaw

Abbie Abboud & Judith Young

Adam Seliski

Alex & Tamar Nelson

Alice J. Porter

Alicen Spaulding

Alicia M. Bloch

Alison Aten

Allen & Karlene Mayotte

Allison Adrian

Alyssa Schulte

Amanda & Mark Tempel

Amanda Przynski

Amber Schmidt

Amy Clark

Amy Horst

Amy Parsons

Amy Roach

Andrew Momont & Kim Langness

Andrew S. Leonard

Angela Guentner

Angie C. Fotopoulos

Angie Powell & Allison Thielen

Ann & Robyn Mathews-Lingen

Ann Oberling

Ann Olbering

Ann Rubin & Sandy Almquist

Anne E. McManus *

Anne E. Miller

Anne Kempainen

Anne M. Walters

Anne Vattendahl

Annette Quas

Annikka Anderberg Wilson

Anonymous

Anonymous

Anonymous *

Arouna Phommasonvanh

Barbara & Jay Deitch

Charlotte Moses

Cheryl A. Schweitzer

Cheryl Biegler

Cheryl Grady

Cheryl Rivera Beaumont

Chris Dinderman

Chris Feinman

Chris Lienert

Christian O'Connell- Moe

Christin Winkler & Kelli Beilich

Christine M. Martin

Christopher D. Ertel

Christopher Hermann

Chuck & Lizzie Gruber

Chuck H. Burrill

Claudia & Jim Aurand

Clifford C. Goltz

Cole Buchtel

Colleen & Mark Kokesh

Colleen & Peter Schroeder

Colleen & Brett Murray

Corey Smith

Councilmember Elizabeth Glidden

Craig and Linda Franz

Craig Koch

Crystal Ruzick-Friskney

Cynthia Preston

Denise McCabe

Dennis Kearney Family

Dennis McKee

Dennis Q. Daigle

Diane L. Kittelson

Diane M. Leigh & Janet K. Hamilton

Dianna Nova & Julie Loehrer

Dick Madigan & Ed Anderson

Don F. Quaintance

Dona Jordan

Donna, Peter, & Michael Norbeck

Doug & Joyce Batcher-Malchow

Doug & Ann Duea

Douglas A. Larson

Douglas J. Srenaski & Stephen Schweckendieck

Dr. Cheryl Maloney

Dr. Frank Rhame

Dr. Jill Manske

Dr. Judith Zier

Dr. Kevin M. Rozman

Dr. Kiran Belani

Dr. Walter A. & Jacqueline A. Blue

Drs Alessandra Chiarelli & Michael Haase

Duane Boom

Eddie Gaines

Edward Kulik *

Edward M. Juda

Edward W. Reed

Eileen Hesch

Elisabeth Seburg

Elizabeth Darling

Elizabeth Dussol

Elizabeth M. Vickman

Ellie Hino

Elsa Kiflu

Emily Bastian

Eric Gustin

Eric Mueller & Burton Coffin

Erica Nego

Erik D. Gronberg

Erika Shatz

Erin McNeese

Estelle Willens

Felix & Ann Phillips

Francie Glickman

Francis & Janet Eggert

Frank & Jane Hennessy *

Frank J. Sorauf

Frank Olson

Fredrick Hey, Jr.

Gail Behrens-McArdle

Gary A. Christensen

Gary A. Hudson

Gary Goodman

Gay S. Gonnerman & Lawrence A. Koch

Gene & Charlotte Frampton *

Genevieve A. Clute

George & Cindy Stamm

George L. & Lynda L. Withbroe

Gerald T. Flom

Geraldine Dudley

Gladys E. Pederson

Glen & Kate Varns

Glenn & Ann Kohlhepp

Gloria Jones

Gordon J. & Helen L. Carlson

Grant R Lotz

Gregory A. Rogers & White Ash

Gregory L. Anderson

Gregory L. Johnson

Gregory Terhaar

Gretchen Stich

Gretchen Switalski

Gwen Bernardy-Bauer

Gwendolyn M. Whitmore

Hannah & Sam Kokesh

Harlan Copeland

Harland Brockoff

Harold & Shirley P. Haskovitz

Heather & Wayne Eklund

Heather Lien

Heather Smith

Heather Stanton & Meagan Beck

Heidi Adelsman & Mike Everetts

Heidi Schreiber

Helen M. Nelson

Herman J. Birnberg

Holly Miles

Jack Lewis

Jackie Zum

James & Maureen Johnson

James B. Wolfe

James H. Nepp

James J. Biederman

James Larson

James Larson & Jack Povlock

James Pennington

Jamie Zebell & Calvin Stanley

Jan Olafson & Robbyn Shiell

Jane B. Galbraith

Jane Newman & Amy Lange

Jane Ramseyer Miller & Anne Breckbill

Jane Stern, & Pat Sexton & Clare Sexton-Stern

Janet L. Mengelkoch

Janet Rice

Jasmine Wilkins

Jason J. Osburn

Jason J. Potasnik

Jeff & Mary Frush

Jeff Jones

Jeffrey D. Lorch

Jeffrey Farnsworth

Jenni Ripley

Jennifer & Blaise Porter

Jennifer & Ross Abbey

Jennifer Ho

Jennifer O'Neill

Jim & Billie Cashman

Jim Kemp *

Jim Schoeke

Jim Szymczak

Jo Montie

Jo Sue & Lauren Wold

Joan & Dick Hilden

Joan M. Johnson

JoAnn Boudreau

Joanne D. & Douglas K. Savitt

Jocelyn Woods

Jodi R. Fritsche

Joel Buchan

Joel Molitor & Sarah Schmitt

John & JP Meyers

John & Laura Broghammer

John & Vicki Keefe

John Doll



THANKS

to everyone who made financial
& in-kind gifts between 10/24/08 - 1/19/09

Barbara Goldberg

Barbara Nygaard

Barry Leavitt

Bertine Holmboe *

Bev & Sheldon Mains

Beverly Brogie

Bill & Barb Taylor

Bill & Virginia Willner

Bill Malleuge & Doug Janson

Bill Schlichting & Steve Lenius

Bob Brendsel

Bonnie L. Erickson

Brad Dononick & Jay Tarnowski

Brennan Hannon

Brian D. Thorson & Dennis C. Bless

Brian K. Larson

Brian Mierow

Brian Robinson

Bud Lie & Randy Ingram

Candace H. Kane

Candace Hunter

Cara Knittel

Cari McCollor

Carol Y Waldoch

Carole Rinde

Carolyn Lima

Catherine & Ron Burris

Cathy McGeachie

Cecelia A. Newton

Charla Hudlow

Charles A. Hendrix & Elizabeth Dolezal

Charlotte & Paul Jacobson

Cynthia Reuss & Sally Heuer

Cynthia Rooney

Dan Haag

Dana Johanson

Dana Lee Cook

Dana Lien

Daniel Boyer

Daniel Cashman

Daniel Dockman

Daniel G. Ratka

Daniel Nidzgorski

Danielle Goins

Dave & Brenda Reddick

Dave Em

Dave J. Rompa

David & Ginny Poplau Family

David & Martha Butler

David A Hanson *

David Bjork & Jeff Bengtson

David Brookbank

David Dexheimer & Everett Tong

David E. Hanson *

David F. McMahon

David G. McDonnell

David Hillert

David J. Frid

David K. & Wren Wells III

David Lozinski

David Welper

Dawn Bartell & Lois Peterson

Deb Hagel

Debbie & Mike Wyman

Deborah Snouffer

Debra McGovern



John J. Odonnell
 John J. Szczech
 John M. Apman
 John P. Goggin & Julie Weigher
 John Schlobohm
 John Sheehan
 Jon Plemons
 Jonathan Tate & Andrew Gerst
 Joseph Larson & Charles Jordan *
 Joyce Kapsner
 Judith Berman
 Judy & Rich Olsen
 Judy Garrison
 Judy Herbert
 Judy Ratliff
 Jules & Janice Goldstein
 Julie Weighter
 K W Havey
 Karen Peterson
 Karen Waldron
 Karl M. Holmberg
 Kate Lehmann
 Katherine Barton
 Katherine Jaeger
 Katherine Werner
 Kathleen & Allen Lenzmeier
 Kathleen Conklin
 Kathryn Johnson
 Kathryn L. Houston
 Kathy Bormann & Sarah Myott
 Kathy Briggs
 Kathy Moore
 Kathy Vader *
 Katie Ireland
 Katie Schmall
 Kay & Richard McClain
 Keith Cheetham
 Keith H. Smith
 Kelly Guptil
 Kelly McClure
 Kelly Vossberg & David W. Murphy
 Kelsey Kiefer
 Kelsey True
 Kendra Nelson
 Kenn Carlson
 Kenneth L. Locicero
 Kerry & Debra Boese
 Kerry Hinze & Chantily Malibago
 Kevin Boedigheimer*
 Kevin H. Flam *
 Kevin Hershey
 Kevin Mohr
 Kevin R. Home
 Kevin Rajotte
 Kevin Van Deraa
 Kim Phelps
 Kim W. Waldof
 Kimberly Johnson & Carla Simeone
 Kimberly Wells
 Kim-Loan T. Nguyen
 Kirk & Paula Fox
 Kjiessia Johnson Karol
 Klaus Wormuth
 Kris Lasneski & Jen Mills
 Kristi B. Stratton
 Kristin Green & John Ratigan
 Kristin Powell
 Kristin Vann
 Kurt & Amy Holter

Kyle Kossol
 Lance T. Radziej
 Larry Fonnest
 Laura Bachinski & Renee DeLong
 Laura J. Tabolitch *
 Laura K. Jelinek
 Laura Migliorino
 Laura Toth
 Laurie Aaronson
 Lavender Magazine
 Lawrence A. Overby
 Leah & Jeff Springer
 Lee L. Roehl & Paul Shapiro
 Lee Zurek
 Les Vikre
 Lila Nelson
 Linda & Jeff Raines
 Linda G. Slarks
 Linda Maylish
 Lindsey Kopp
 Lisa B. Uhlrig
 Liz & Joe Brandel
 Lois & Ron Beck
 Louis L. Vlahos
 Louise Teeter
 Louise Ziegler
 Lydia & Jeremy Bundgard
 Lyle J. Jaeger
 Lyle Kohlhepp
 Lyle Schlundt
 Lynn Marie Hill
 Lynn Ostrowski
 Lynnette Kayser
 Mack & Jan Tiggas
 Mandy & Sally Hwang
 Marcia & Mark Munson
 Mari Jo Williams
 Maria & Kevin Hiniker
 Marianne C. D'Angelo
 Marjorie Thomas
 Mark & Shirley Mund
 Mark A. Lozano
 Mark Babel
 Mark S. Dietz & Tom Segal
 Mark S. Dullinger
 Mark Stephens
 Mark Wagenius & Dennis Oliver
 Marni M. Heintz
 Marsha J. Berry
 Marsha Partington
 Marshalls Donation Department
 Martha Hedstrom
 Martha Jirovec
 Marvin Welk
 Mary & Scott Barraclough
 Mary Ellen Bishop
 Mary F. Bergland
 Mary Grandy
 Mary Jensen
 Mary Jo & Marty Malecha
 Mary L. McMahon
 Mary La Vaque
 Mary Lynn Gallagher
 Mary M. Coudron
 Mary McGraw & Dawn Mans
 Maureen Ness
 Meg McAlister
 Melissa Herda-McKee
 Michael D. Cassidy

Michael Garret & Tony Scornavacco*
 Michael Hnath
 Michael J. Peller
 Michael Kniecik
 Michael Oian
 Michael P. McGee
 Michael Wysocki
 Michelle Encarnacion & Allen Biltoft
 Michelle Struss
 Mike & Janet Debelak
 Mike Cassidy & Alan Holliday
 Mike Muehlbach
 Mohan Mathews
 Monica Miles
 Monica Schliep
 Monica Travis
 Moses Renault-Moses
 Mr. & Mrs. Patrick Kush
 Nancy & Anthony Paul
 Nancy & Gerald Dod
 Nancy Emery

Peter Austin
 Philip & Susan Gulstad *
 Philip W. Cooper
 Pierre Tardif & Eric Tollefson
 Piotr Kloda & Marc Radinzel
 Rachel Goligoski
 Rachel Nieder
 Rae Ann Eisbrener
 Ralph Winkelmeier
 Randy Fitzgerald
 Randy Hornstine
 Randy J. Kolodzi
 Randy P. Miranda
 Ray & Mary Ann Thul
 Raymond L. Gooderl
 Rebecca J. Albus
 Rebecca Rayl
 Rebecca Skoler
 Rev. Gordon Vogt
 Rev. Lee D. Hallstrom
 Rex J. Beyer & Nick Meyer
 Richard Cooper
 Richard Darland

RT Rose
 Ruben Murray
 Ryan Allen & Dara Rudick*
 Ryanne Underhill
 Sally Leighninger
 Sam & Sharon Abelson
 Sam McClure
 Samuel R. Stewart
 Sandra Hall
 Sandra Isham & Allen Anderson
 Sandra J. Agustin & Desiree Larson
 Sandy Johnson
 Scott & Andrea Radloff
 Scott Schlaffman & Tom Genty
 Sharon & Douglas Falls
 Sharon J. Olson
 Sharon L. Ernard
 Shawn Dunn
 Shawn Erwin
 Sheila Bray & Paula Anderson
 Shelley Wicinske & Jolie Snow
 Sher Curry
 Sherrie Stockton & Anita Bradshaw
 Shirley Stann
 Soren A. Ryberg
 Staci Preiado
 Stan D. Atkinson
 Stephanie Abel
 Steve & Margie Krause
 Steve Brinduse & Terry Cole
 Steve Pearthree
 Steve Thompson
 Steven & Laura Hanson
 Steven D. Huebner
 Steven D. Levy
 Steven Garrigan
 Steven Protzman
 Sue Austin & Family
 Sue T. Crolick
 Susan & Joe Robinson
 Susan Brott & Bob Noyed
 Susan Lester & Petra Mertens
 Susan Reaney & Vince Ghes *
 Susan Robertson & Brenda Villard
 Tamra M. Falk
 Teresa & Mike Rowekamp
 Terry O'Brien
 Theresa C. Gaffney
 Thomas Blackmar
 Thomas H. Foster & Pauline K. Foster
 Thomas Hale
 Thomas J. & Michelle Gamble
 Thomas J. Burke
 Thomas Knabel
 Thomas L. Thul

Tim & Molly Portz
 Tim Toyen & Dave Myhre
 Timothy & Katherine Roseth
 Timothy E. Welsh & Bruce Andrews
 Timothy K. Schultz
 Timothy Kanaley
 Tineka Kurth
 Todd Connaughty
 Todd Park & Brian Thomson
 Tom Ekborn
 Toni Pendergrast
 Traci & Mike Schmitt
 Vicky Adams & Kathy Bell
 Victoria Huitt
 Wayne & Bonnie Sander
 William Biermaier
 William G. Kingsbury
 Zoe Daniels



THANKS

to everyone who made financial & in-kind gifts between 10/24/08 - 1/19/09

Nancy Larson & John Lang
 Nancy Lee Rasmussen
 Natalie Griffith
 Natalie Patton
 Nathaniel Wilson-Grady
 Neil Hanson
 Nic & Angela Skrade
 Nicky & Becky Simon Burton
 Nicole Kubista & Jenny Ryan
 Nikolas Kotz
 Nita Schroeder
 P.J. Hillesheim
 Pamela & Steve Baker
 Pamela Glander
 Pamela Petersen
 Pat Seger
 Patience Stellmach
 Patricia & Gerald D. Stone
 Patricia L. Hanauer
 Patrick & Patricia McLaughlin
 Patrick J. Cain
 Paul & Cindy Jacobson
 Paul A. Daniels & Bill Mattox
 Paul A. Schumacher
 Paul E. Mittelstadt
 Paul Masiarchin
 Paulie Jensen Friedmann
 Peggy Carnes & Eric Van Wyk

Richard Miller
 Richard Stever-Zeitlin
 Richard Voss
 Richard W. Morrison
 Richard Weil & Lindsay Nauen
 Rick Polenek
 Rita Richardson
 Robb Whittlef
 Robert & Mary Ellen Manske
 Robert Fredericksen
 Robert Gotwalt & Norman Jones
 Robert V. Hassen
 Robert W. Schaffhausen
 Roberta Byrd
 Robin Goodwin
 Robin Grande
 Robin L. Johnson
 Roger Grusznski
 Rolf & Jayne Waller
 Ron Wiltgen
 Ronald D. Cody
 Ronald E. Joki
 Ronald J. & Kay C. Bach
 Ronald Wilson
 Ronda Willsher
 Rosalin Chrest
 Rosemary Lovett & family

* Denotes Friends of Aliveness Program donors, who pledge monthly gifts.

